

# TensorGrip®



# L12

## THE ULTIMATE WEB SPRAY CONTACT ADHESIVE

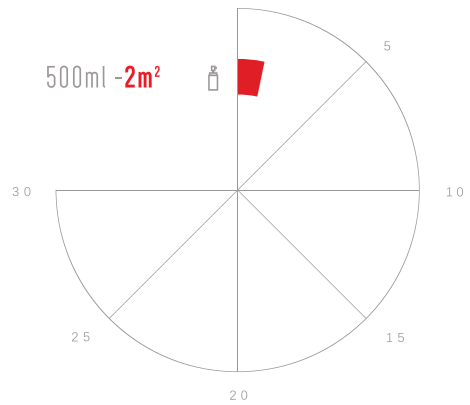
TensorGrip® L12 is a fast drying contact adhesive with good heat resistance. It is suitable for bonding a variety of materials to sheet timber, metal and some hard plastics. Immediate permanent bonds can be achieved by double-sided applications on most substrates. Its tacky pressure-sensitive properties make it ideal for thick substrate bonding and wood panel buildups. ALWAYS test TensorGrip® L12 to determine suitability for your particular application prior to use in production. NOT RECOMMENDED for use with plasticised vinyls, flexible plastics, expanded/extruded polystyrene, PE or PP.

### ADVANTAGES

- Incredible Grab.
- Good Heat Resistance.
- High Solids.
- Easy Application Control.
- Versatile.
- Economic.
- Eliminates mechanical fixings
- Solid Surface Applications.

### TECH DATA

#### SQUARE METRE COVERAGE (m<sup>2</sup>):



#### APPLICATION:



#### FLASH-OFF\*:



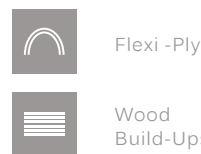
#### OPEN TIME\*\*:



#### COLOUR:



#### SUITABLE FOR:



#### PROPERTIES:



\*consult the Spray Manual for a more detailed tutorial on the bonding process.

\*\*depending on ambient temperature.

CHEMICAL TECHNICAL DATA

Viscosity	300 cps 25°C sp# 30 r.p.m
Total Solids	28.0% +/- 2%
Colour	Clear
System Flammability	Non-flammable adhesive in flammable propellantin
Shear	2482 N
Peel	72 N
Shear adhesion failure temp. (SAFT) 100gram	100gram > 105°C
Flash Off	2-3 mins dependant on temp & humidity
Open time	Up to 40 mins
SHELF LIFE	18 months from date of manufacture

HANDLING & STORAGE

- Consult Safety Data Sheet prior to use.
- Do not expose to temperatures exceeding 50°C/122°F
- Store at temperatures between 10°C and 25°C.
- Avoid exposing aerosol containers to high temperatures or direct sunlight.
- Keep away from heat, hot surfaces, sparks, open flames, and other ignition sources.
- Shake well before use.
- To prevent nozzle from blocking, turn can upside down, press nozzle until spray is clear of adhesive.
- Replace cap after use to protect actuator / valve.
- Use only in a well ventilated area.
- Always test product to determine suitability for your particular application prior to use in production.

DIRECTIONS FOR USE

- This product is designed to be applied to two surfaces to be bonded together. Make sure that surfaces are clean, dry and free from dirt, dust, oil, loose paint, wax or grease, etc. For best results, the temperature of the adhesive and the surfaces being bonded should be between 60 °F - 80 °F (16 °C - 27 °C).
- Use with adequate ventilation.
- Prior to use, check compatibility by spraying a small test patch of the adhesive on the substrate. This product may degrade some substrates.



1. SHAKE WELL BEFORE USE.



2. Make sure that surfaces are clean, dry and free from dirt, dust, oil, loose paint, wax or grease, etc.



3. Spray about 10-20 cm (4" – 8") away at a 90-degree angle to the surface, applying a uniform, even coat of adhesive to obtain 80% to 100% coverage of the surface.



4. If necessary, spray another coat of adhesive in areas that appear to need more adhesive. Spray surfaces vertically and horizontally.



5. Allow 2-3 minutes for adhesive to tack off until no adhesive transfers to the knuckle when touched.



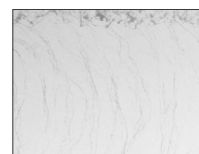
6. Bring the surfaces together with spray patterns crossing each other at 90° for best adhesion, ensuring adequate pressure is applied.



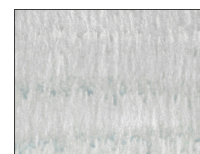
7. A roller is recommended to apply a uniform pressure to achieve maximum strength. Allow 24 hours for the adhesive to fully cure.

8. To prevent nozzle from blocking, turn can upside down press nozzle until spray is clear of adhesive. If nozzle becomes blocked, the adhesive can be removed with a solvent such as lacquer thinner or acetone.

COVERAGE



COVERAGE TOO LIGHT



COVERAGE TOO HEAVY



CORRECT APPLICATION = 20 dry gms/sqm